

Sheerness Area Committee

Capital Projects Team Update

Bench Refurbishment

The High Street bench refurbishment programme was completed on 28th May. The ends of the benches have been painted Marine blue and the timber slats rubbed down and re-treated and/or replaced as required.



Further benches have been identified around the town centre, which required refurbishment. The contractor has started work on these.

New Planters

The new timber planters were installed throughout the High Street on 4th June and the existing planters relocated to Beachfields and planted out by Sheppey matters community gardeners.



Clock Tower

The Clock Tower was dismantled and removed w/c 27th September, with it leaving Sheerness on Thursday 30th September and being taken to the Smith of Derby workshop.

Time lapse photography of the removal was captured and features on the Visit Swale clock tower restoration project page. This photography will be used alongside interviews with council members, members of the public and representatives from Smith of Derby, to document this project.

Regular updates and pictures of the restoration process to feature on regular Visit Swale blog. Most recent images from the workshop can be seen below.



Timber hoarding around the site was erected, which includes interpretation panels and imagery detailing the restoration project, alongside historical information on the clock tower.



UKPN have been to site and are briefed and ready to reconnect the power feed to the tower, following its installation next year.

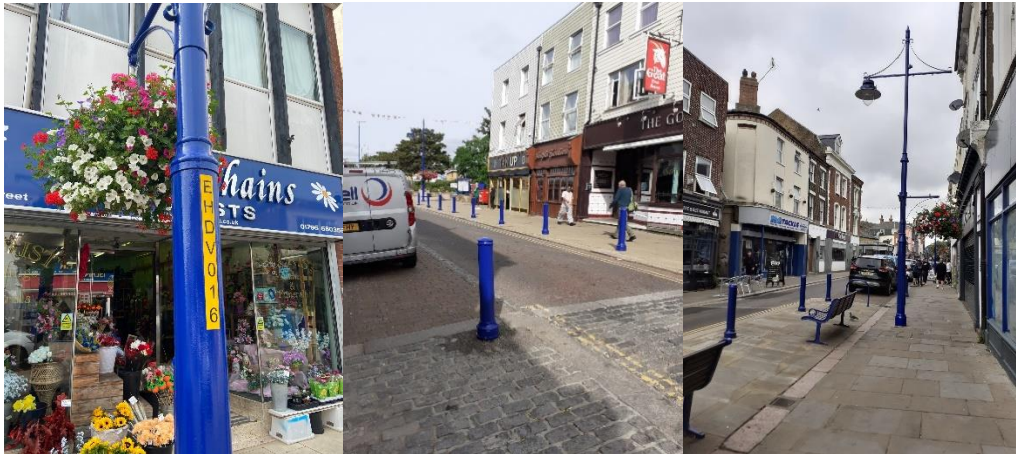
Concrete Balls and uprighters around the clock tower

KCC have advised that the ball bollards should remain around the site of the clocktower. This decision was supported by SBC's conservation officer. These will be jet washed and repaired where required, ahead of the clocktower's return.

The team are also in discussions with electrical contractor Prowired regarding the installation of the new uprighters prior to the tower being re-erected.

Highway Asset Painting

The painting of Highway assets along the High Street and Broadway were completed on 17th September. The assets were painted Marine Blue.



Sheerness Permanent Town Centre Informal Consultation

Following the informal consultation, in which a total of 810 responses were received, a report was presented to the Joint Transportation Board on 6th September. The report detailed the results of the consultation and the next steps. There are clear themes and key responses captured within the informal consultation analysis for Sheerness that Swale Borough Council will now focus upon, as part of the capital projects programme, to introduce improvements to the town centres.

Removal of large yellow back sign at entrance to High Street

At SBC's request and in consultation with KCC and Sheerness Town Council, the large yellow backed sign at the entrance to the High Street has now been removed.

